



## 6mm 304 321 304L 316L Stainless Steel Sheet Fabrication Polished BA 2B Finish

Our Product Introduction

### Basic Information

- Place of Origin: china
- Brand Name: jinshunlai
- Certification: ISO, AISI, ASTM, GB, EN, DIN
- Model Number: 0.1nm-900nm
- Minimum Order Quantity: 1kg
- Price: Contact Us
- Packaging Details: Waterproof Paper, Steel Strip Packed and other Standard Export Seaworthy Package, or customized package
- Delivery Time: 5day
- Payment Terms: L/C, T/T , Western Union
- Supply Ability: 90000ton

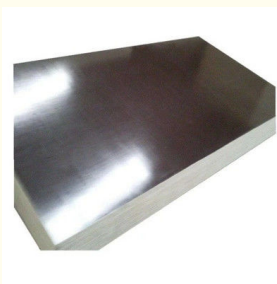


### Product Specification

- Application: Construction, Decoration, Industry, Etc.
- Edge Treatment: Mill Edge, Slit Edge, Round Edge, Etc.
- Length: 2000mm-6000mm
- MOQ: 1 Ton
- Material: Stainless Steel
- Package: Standard Export Package
- Payment Term: T/T, L/C, Western Union, Etc.
- Processing Method: Cutting, Bending, Welding, Etc.
- Surface Treatment: Polished, Brushed, Etched, Embossed, Etc.
- Thickness: 0.3mm-20mm
- Width: 1000mm-2000mm
- Highlight: **6mm Stainless Steel Sheet Fabrication, 316L Stainless Steel Sheet Fabrication, 316L polished stainless steel sheet**



### More Images



for more products please visit us on [copper-solid.com](http://copper-solid.com)

## Product Description

### PRODUCT DESCRIPTION

6MM STAINLESS STEEL PLATE CHINA SUPPLIER 316 316L 310S STAINLESS STEEL SHEET

THICKNESS	3MM-20MM
TOLERANCE	±1%
STEEL GRADE	310S, 410, 316L, 316, 430, 304, 304L
SURFACE FINISH	BA
INVOICING	BY THEORETICAL WEIGHT

CHARACTERISTICS: BECAUSE OF THE ADDITION OF MO, IT HAS GOOD CORROSION RESISTANCE, ATMOSPHERIC CORROSION RESISTANCE AND HIGH TEMPERATURE STRENGTH, WHICH CAN BE USED UNDER HARSH CONDITIONS;

EXCELLENT WORK HARDENING (NON-MAGNETIC);

EXCELLENT HIGH TEMPERATURE STRENGTH;

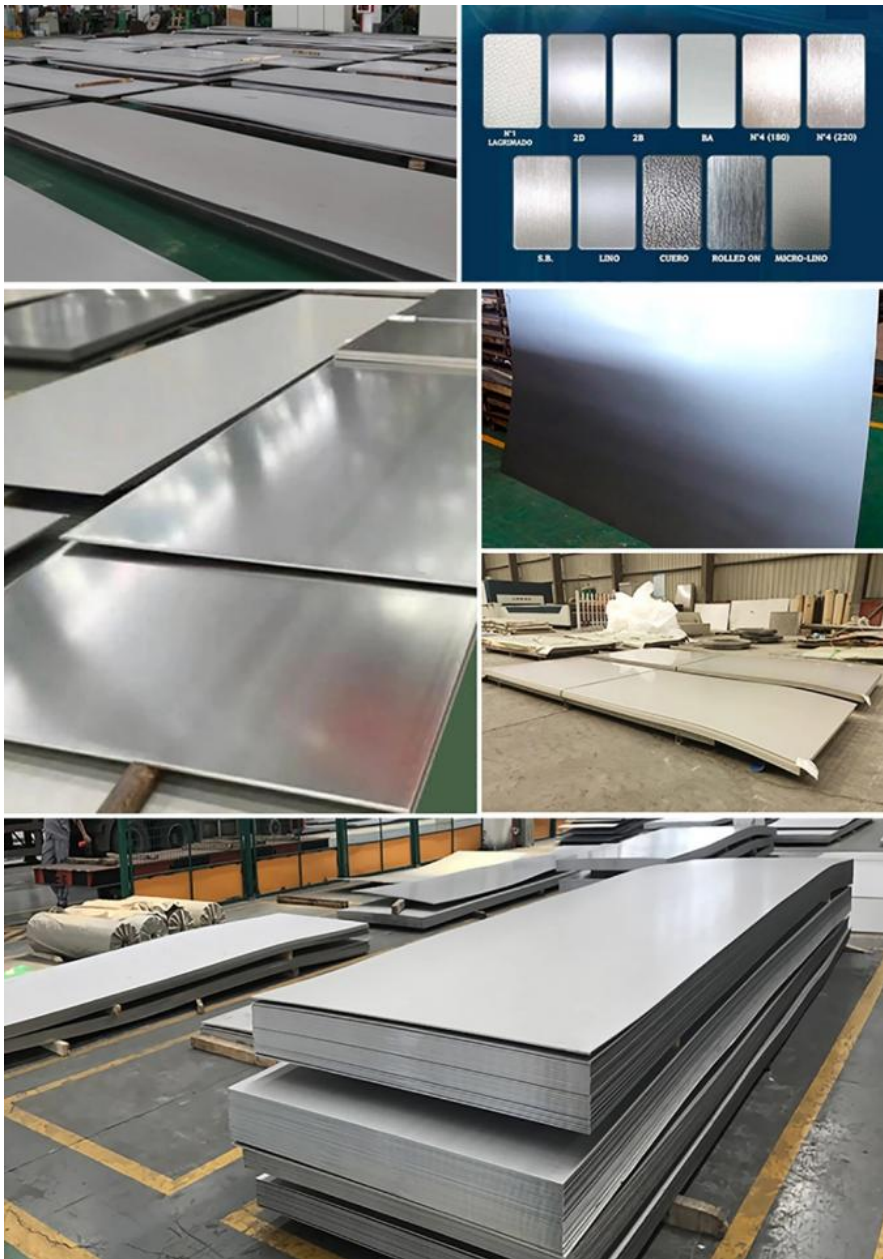
THE SOLID SOLUTION STATE IS NOT MAGNETIC;

COLD ROLLED PRODUCT APPEARANCE GLOSS IS GOOD, BEAUTIFUL;

RELATIVE TO 304 STAINLESS STEEL, THE PRICE IS HIGHER.

### PRODUCT DESCRIPTION

STANDARD:	JIS, AISI, ASTM, GB, DIN, EN, JIS, AISI, ASTM, GB, DIN, EN, ETC.	PLACE OF ORIGIN:	JIANGSU, CHINA
BRAND NAME:	SHUANGHEYI	MODEL NUMBER :	201 304
TYPE:	WELDED	STEEL GRADE:	300 SERIES
APPLICATION:	INDUSTRY/CONSTRUCTION	CERTIFICATION:	ISO, AISI, ASTM, GB, EN, DIN, JIS
WELDING LINE TYPE:	ERW	TOLERANCE:	±1%
PROCESSING SERVICE:	WELDING	GRADE:	SS 304 SS316L
PRODUCT NAME:	STAINLESS STEEL SHEET	KEY WORD:	SCHEDULE 10 STAINLESS STEEL SHEET
SURFACE:	POLISHED	PRICE TERM:	CIF CFR FOB EX-WORK
MOQ:	1 TON	TECHNIQUE:	HOT ROLLED , COLD ROLLED , EXTRUSION
PAYMENT:	L/C,T/T	EDGE:	MILL EDGE SLIT EDGE
PORT:	QINGDAO, CHINA		



### **PACKAGE:**

#### **STANDARD PACKAGE:**

- 1.CARDBOARD ENCASE THE ENDS OF THE COIL,WITH CORE AND OUT STEEL EDGE PROTECTION.
  - 2.STRIP ARE WRAPPED WITH METAL STRAPPED AND PACKED IN STRONG WOODEN PALLETS.
- SPECIAL CUSTOMIZED PACKAGE IS ACCEPTABLE UPON CUSTOMERS' REQUEST.



**Wuxi Jinnuo copper Co.,Ltd**



+86-17763564398



sales01@shuangheyisteel.com



copper-solid.com

32 Chengnan Road, New District, Wuxi City, Jiangsu Province, China